



# Newsletter

## Dorking Nursery October 2020

Dorking Nursery School and Children's Centre, West Street  
Dorking, Surrey, RH4 1BY, Tel: 01306 882397  
[www.dorkingnurserychildrenscentre.org.uk](http://www.dorkingnurserychildrenscentre.org.uk)

Dear parents and carers

It is hard to believe we are at the half term point already! The last 8 weeks of term have flown by and we now have 90 children settled with us! The children have all shown their confidence, resilience and independence in starting at Nursery. Thank you to all the parents, grandparents and carers for being so patient with us as we continue to reflect and adapt our policies and processes in light of Covid-19 so that we can keep everyone as safe as possible.

A number of dates have been added to the 'Important Dates' section below, please make a note of them on your calendar/diaries. We have added the INSET days for the forthcoming year, as well as some other events.

If you have not done so already, please connect your PMX Parentmail account. This is the best way for us to get information to you as soon as possible, and don't forget to follow us on social media if you are on Facebook or Twitter @DorkingNursery



Next week is half term, therefore Nursery is closed from Friday 23<sup>rd</sup> October until Monday 2<sup>nd</sup> November. Have a safe week and enjoy the time with your children!

### Important Dates:- (new dates added in green)

Friday 23<sup>rd</sup> October - break up for  $\frac{1}{2}$  term

Monday 26<sup>th</sup> October to Friday 30<sup>th</sup> October -  $\frac{1}{2}$  term, Nursery closed.

Monday 2<sup>nd</sup> November - Nursery re opens

Friday 11<sup>th</sup> December - Xmas Jumper Day - children to wear their best Xmas Jumpers - donations split between Save the Children and Child Autism UK (this is the chosen charity of Michelle, who worked in our SEND team and passed way earlier this month)

Friday 18<sup>th</sup> December - last day of term and pyjama day - children (and staff) come to school in their pjs!

Monday 21<sup>st</sup> December to Friday 1<sup>st</sup> January 2021 - Nursery closed for Christmas

Monday 4<sup>th</sup> January - Nursery INSET Day - closed

Tuesday 5<sup>th</sup> January - Nursery reopens after the xmas holidays.

Thursday 1<sup>st</sup> April - Nursery INSET day - closed

Friday 25<sup>th</sup> June - Nursery INSET day - closed

Friday 16<sup>th</sup> July - last day of term for the children

All term dates are available on our website, we follow the Surrey term dates -

<https://www.dorkingnurserychildrenscentre.org.uk/term-dates>

**Car parking/dropping off** - there are a number of parents arriving in the car park at the beginning and end of sessions and being dropped off by a family member who is then waiting for them, or parking in the car park. Our car park is not big enough for this to happen and our spaces are reserved for families in our SEND unit or with a permit. The other numbered spaces are for the residents at the Fire Station flats. Please use alternative car parks when dropping off and collecting your child and walk the short distance to nursery.

**End of session pick ups** - please remember to be on time for the end of session to collect your child. All staff have commitments when the sessions finish in either attending meetings or covering for lunch sessions etc, therefore it is important that children are collected on time. It is also very unsettling for your child if they are the last to be collected.

**Dressing appropriately** - parents may not realise the amount of time their children spend outside when they are with us and we are maximising the outdoor spaces we have even more at present for good ventilation. They love exploring the environment outside, therefore, it is vital they are dressed for the weather each day, with lots of layers if needed. Please make sure your child has a warm coat, as well as hats and gloves if needed.

Elastic waisted clothing is also ideal for young children to be independent when using the bathroom. Please ensure we have enough nappies if your child needs them, and also spare clothes in their bag, so that they can be changed into their own things if they have an accident or get wet having fun!

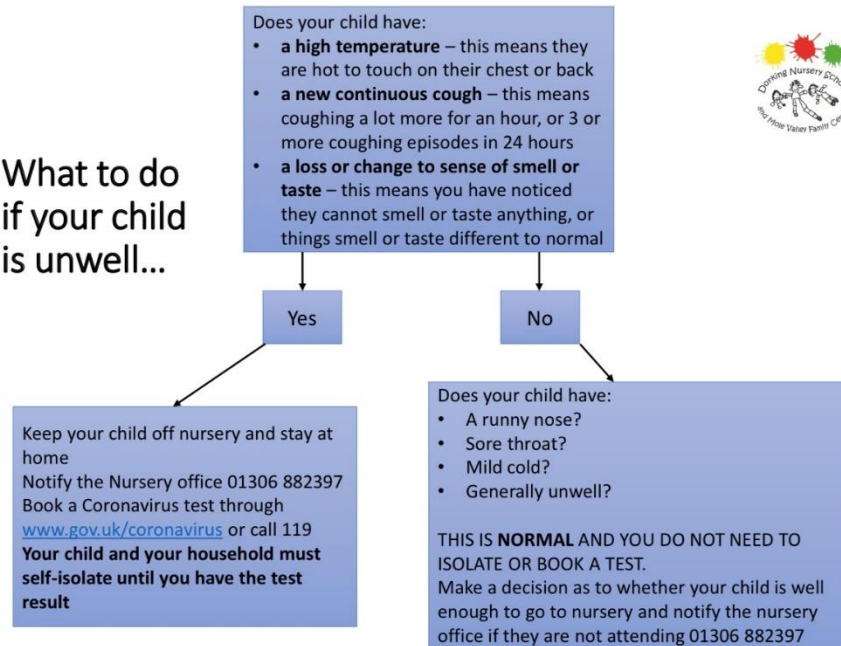
**Ventilation** - the current DfE and PHE advice is for classrooms to be well ventilated with windows and doors open - we do appreciate this may sometimes feel as if it is colder inside than out, however, we have to keep everyone safe. The staff are making sure they are well dressed in layers (and thermals) too!

**Illness and absence** - this is a subject that is talked about frequently at the moment. We follow the PHE guidance at all times with regards to all childhood illnesses, as well as the incubation periods for them.

Your child will get poorly; colds, runny noses, sore throats, sickness and diarrhoea are all viruses that children will develop that help them to build up their immunity and stay healthy. However, at the moment, we have to be cautious when your child has the Covid-19 symptoms.

If at any time your child or someone in your household has a high temperature, new continuous cough or loss of taste or smell, your household must begin a self-isolation period and request a Covid-19 test for the symptomatic person. We do appreciate there are issues nationally with booking and requesting kits which will impact on you/your child getting a result, however, we have to ensure the rules are adhered to in order to keep everyone safe. We are still having parents who are surprised when we ask them to isolate and book a test if their child has a temperature. Please follow the flow chart sent home to you previously.

## What to do if your child is unwell...



Covid-19 will be with us for sometime and we will continue to do as much as possible to ensure consistency for your family and children, however, we also have contingency plans in place should another national or local lockdown take place. We do appreciate the disruption this will cause and we will do everything we can to keep this to a minimum.

Please remember that if you have given your child Calpol or any type of paracetamol/ ibuprofen in the morning you need to keep them off Nursery for the day. These medicines can mask Covid symptoms.

**During the half term break, if your child develops symptoms and as a result receives a positive test result, please can I ask you to email the office ([admin@dorking.surrey.sch.uk](mailto:admin@dorking.surrey.sch.uk)) so that I can inform the rest of your child's bubble to isolate as appropriate, and we can make the necessary arrangements for that bubble after the break.**

**£5 termly voluntary contribution** - thank you to those of you who have made your £5 termly contribution to the Nursery. This supports the costs of additional resources, experiences such as Woodland, resources to make playdough and use in the malleable area (such as pasta, rice, cornflour, etc) snacks.. If you have not done so yet, we would be very grateful if you could make a donation to us so we can continue to provide the very best for your child. You can make this donation in cash, in a named sealed envelope or via BACS

A/C name: Dorking Nursery School  
Sort code: 40-19-22  
A/C number: 51209752  
Address of bank: HSBC, Dorking, RH4 1BW

**Tissues** - achool! We ask families to donate a box of tissues to us each term, this means more money in the budget for other things, and helps us keep noses clean!

**Fundraising** - We have found two great new easy ways to raise money for our Nursery School which we hope you will use and spread the word about. Neither of them cost you a penny - you just have to purchase your usual goods and services on line but via one of these two websites and it automatically



raises funds for us. Shops include Amazon, Ebay, Argos, Tesco, M&S, John Lewis, Currys, B&Q and loads more.

Sign up to [www.easyfundraising.co.uk](http://www.easyfundraising.co.uk).



The Giving Machines is another site where you can set up a Giver account and just visit the Giving Machine website before you shop. Sign up at

[www.givingmachine.co.uk](http://www.givingmachine.co.uk)

For more information visit our website - <https://www.dorkingnurserychildrenscentre.org.uk/news/help-us-fundraise-nursery>

**FOND** - 'Friends of Dorking Nursery' is a registered Fundraising Charity, that is parent run. In the past, FOND has organised a variety of events such as raffles and cake sales and raised thousands of pounds a year for additional resources for the children.

Unfortunately, in the last few years, we have not had any parent volunteers keen to help out. If you think this is something you might be interested in helping with, please let us know!

**Fruit** - we also ask for you to donate 1 piece of fruit which is then shared at snacktimes.

**Wellington Boots** - we are running low of our nursery stock of wellington boots. We keep sets of wellies in the nursery for the children to access for water play, when using the mud kitchens, Forest School/Woodland or simply to jump in puddles! If your child has out grown their wellies, we would appreciate any donations.



**Tapestry** - If you have not yet activated your Tapestry account, please can you do so. The link often goes into junk emails, so please check there first. We use Tapestry to share photographs and

observations of your child with you. This is a secure site, where you need a log in to be able to access the account. You can also download an app to access it more easily on your smartphone. If you have been unsuccessful in activating your account, please let your key person know as we can easily reset it.

Staff are using iPods and iPads to take images of your child. I can assure you these are Nursery owned secure devices. Although it may look like the staff are on phones and other devices, it would be a breach of their contract to do so. Your child's safety is paramount.

**The 'C' Word** - we try not to use this word too soon in the year, but Christmas will soon be upon us. We usually hold a family singing event in December as well as parties for the children. Please be patient with us while we consider what we can do safely in light of the Covid-19 restrictions. More information to follow!

If you have any questions to ask, please talk to your key person or another member of staff, or catch me out on the gate at the start of your session!

Regards

Donna Harwood-Duffy  
Headteacher

National Support School  
designated by



National College for  
Teaching & Leadership

